

Material

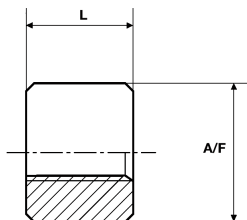
Bronze
SAE660

Linear Motion

Imperial Threaded Square Nuts
Precision Range BS1104 (1957)

DISCOUNTS

| | |
|---------|------------|
| 1 - 5 | List Price |
| 6-19 | -5% |
| 20-39 | -10% |
| 40-59 | -15% |
| 60-99 | -20% |
| 100-199 | -25% |
| 200+ | -30% |



For left hand leadscrews use LH instead of RH

| PART NUMBER | Thread Diameter | Threads Per Inch | Square (mm) A/F | Length (mm) L* | PRICE EACH 1-5 | |
|----------------|-----------------|------------------|-----------------|----------------|----------------|-----------|
| | | | | | RIGHT HAND | LEFT HAND |
| | | | | | RH | LH |
| HPCC05010PB/RH | 1/2" | 10 tpi | 38 | 25 | £84.63 | £91.26 |
| HPCC06258PB/RH | 5/8" | 8 tpi | 47 | 29 | £87.64 | £100.17 |
| HPCC07508PB/RH | 3/4" | 8 tpi | 55 | 32 | £103.22 | £117.97 |
| HPCC10005PB/RH | 1" | 5 tpi | 70 | 45 | £144.12 | £164.72 |
| HPCC12504PB/RH | 1 1/4" | 4 tpi | 85 | 60 | £225.93 | £258.21 |
| HPCC15004PB/RH | 1 1/2" | 4 tpi | 100 | 60 | £276.57 | £316.09 |
| HPCC20003PB/RH | 2" | 3 tpi | 100 | 90 | £442.13 | £505.30 |
| HPCC25002PB/RH | 2 1/2" | 2 tpi | 110 | 115 | £654.44 | £747.93 |

** For longer lengths, seamless joined screws or special materials contact our Technical Staff.*

We specialise in manufacturing from drawings and damaged samples.

Linear Motion Imperial Threaded Square Nuts

